

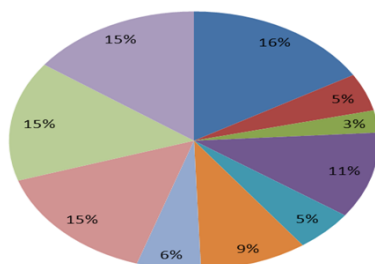


SRCM Growth & Income ETF Portfolio

Report Date : 04/30/2012
 Inception Date : 01/01/2004
 Benchmark Index : MSCI All Country World

Asset Allocation

■ US Large Cap ■ US Mid Cap ■ US Small Cap ■ Intl Equities
 ■ Emerging Mkts ■ Real Estate ■ Commodities ■ Corp Bonds
 ■ TIPS ■ Sov Debt



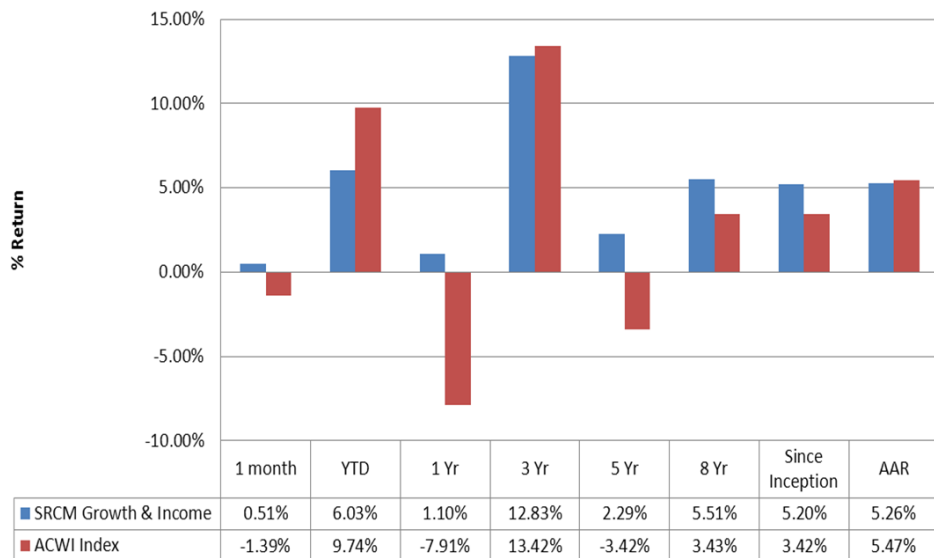
Portfolio Objective

The **Growth & Income ETF Portfolio** seeks preservation of capital while providing modest capital appreciation through a globally diversified portfolio made up of US and International Equities, Real Estate, Commodities, and Fixed Income. The Growth & Income ETF Portfolio will normally be invested in 40% US and International Equities, 15% Real Estate and Commodities, 45% Fixed Income. The Portfolio remains 100% invested and is rebalanced quarterly if necessary.

Investment Process

SRCM has developed a proprietary two step research process that is used to generate the asset allocation and security selection that makes up each portfolio. Step one uses relative strength analysis to weight each asset class; step two uses fundamental and technical analysis to create a unique SRCM score that is used to select the individual ETF's included in the portfolio.

Cumulative Returns



5 Yr Statistical Data

	Std Dev	Sharpe	Alpha	Beta	R2
Growth & Income	12.34%	0.11	0.50%	0.56	94.23%
MSCI ACWI	21.30%	-0.21			

Disclosure Statement

Past performance is not an indication of future performance. The returns stated are gross of fees and commissions. Portfolio performance takes into account the payment of dividends and distributions (assumed to be paid on the ex - dividend date and reinvested). ETF's are presumed to be added to or deleted from the Model Portfolio's at the close of the market the same day a change in the model is made, therefore the actual performance of client portfolio's may differ over the comparable time periods.